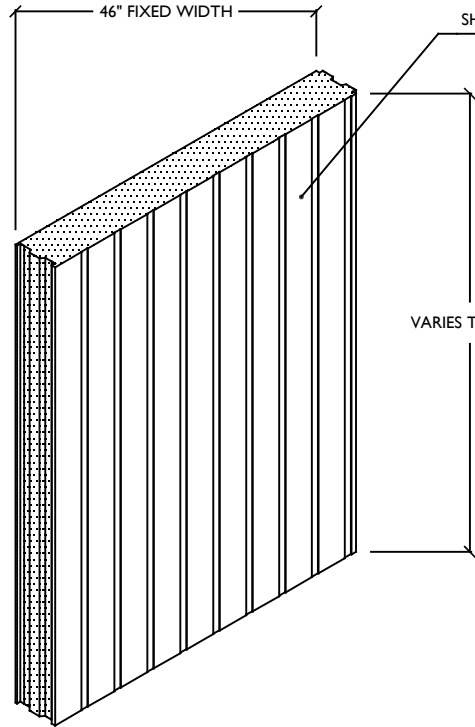
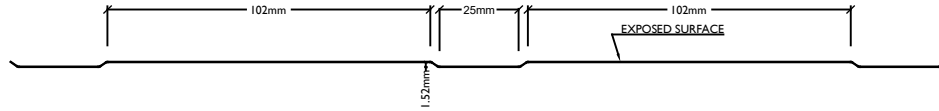


I.0 EXTERIOR SKIN PROFILES:

A. SHADOWLINE - 1168mm (46") PANEL MODULE



SHADOW LINE PROFILE

GENERAL NOTES FOR SPI ISOWALL PANEL

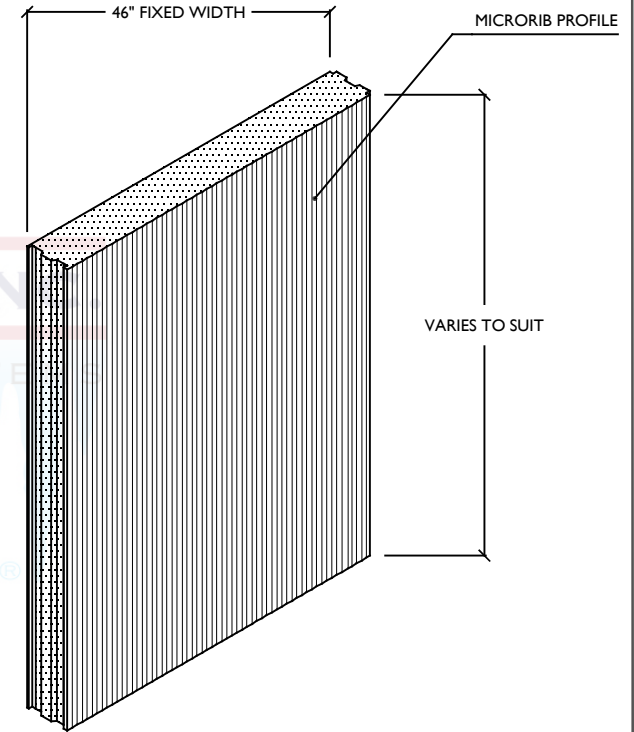
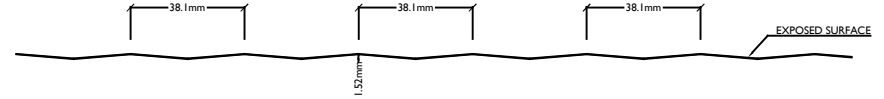
1.0	Material:	Panel: 2" - 10" (50.8mm - 254mm) thick		
	Core:	Rigid Expanded Polystyrene (EPS)		
	Exterior Siding Sheet:	Fabricated from Z275 steel material conforming to ASTM A653M grade 230 steel		
	<u>Profile:</u>	<u>Thickness:</u>	<u>Finish:</u>	<u>Colour:</u>
	Shadowline or MicroRib	0.46mm(26ga)	Smooth or Embossed prepainted steel	Standard White or custom
	Interior Liner Sheet:	Fabricated from Z275 steel material conforming to ASTM A653M grade 33 steel		
	<u>Profile:</u>	<u>Thickness:</u>	<u>Finish:</u>	<u>Colour:</u>
	Shadowline or MicroRib	0.46mm(26ga)	Smooth or Embossed prepainted steel	Standard White or custom

GENERAL NOTES FOR SPI ROCKWALL PANEL

1.0	Material:	Panel: 2.5" - 10" (63.5mm - 254mm) thick		
	Core:	PERMANENTLY BONDED MINERAL WOOL		
	Exterior Siding Sheet:	Fabricated from Z275 steel material conforming to ASTM A653M grade 230 steel		
	<u>Profile:</u>	<u>Thickness:</u>	<u>Finish:</u>	<u>Colour:</u>
	Shadowline or MicroRib	0.46mm(26ga)	Smooth or Embossed prepainted steel	Standard White or custom
	Interior Liner Sheet:	Fabricated from Z275 steel material conforming to ASTM A653M grade 33 steel		
	<u>Profile:</u>	<u>Thickness:</u>	<u>Finish:</u>	<u>Colour:</u>
	Shadowline or MicroRib	0.46mm(26ga)	Smooth or Embossed prepainted steel	Standard White or custom

I.0 EXTERIOR SKIN PROFILES:

B. MICRORIB - 1168mm (46") PANEL MODULE



MICRORIB PROFILE

SITE:

STRUCTURAL PANELS INC

1

DRAWING NO.

N/A

PROJECT NO.

2017

DATE.

TITLE:

STANDARD DETAILS - PANEL PROFILE

N/A

SCALE AT A4.

NB

DRAWN.

NB

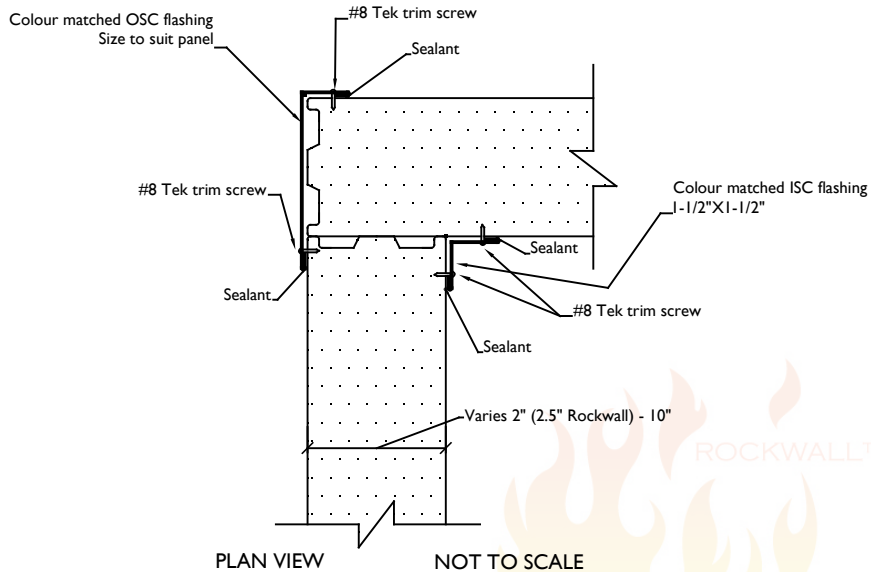
CHECKED.

1.1

REVISION.

STRUCTURAL PANELS INC.

INSULATED PANEL BUILDING SYSTEMS



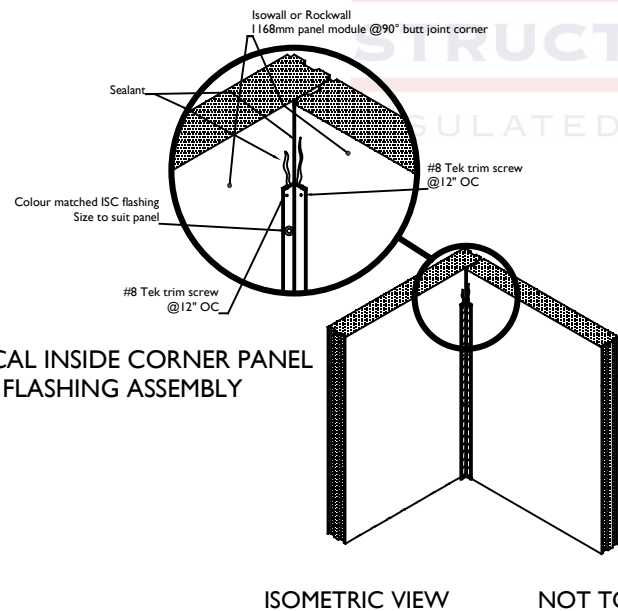
3.0 Typical Corner Installation

3.01 Once Structural Panels Inc Isowall or Rockwall panels have been erected and secured into place flashing must be installed to complete the installation.

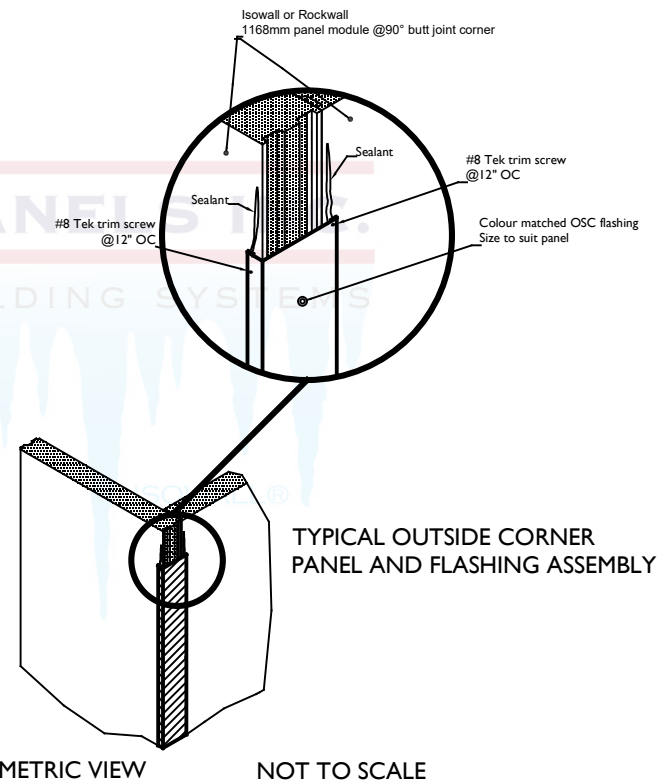
3.02 Apply Adfast Adseal 4800 silicone sealant in one continuous bead to inside of flashing so an air tight seal is achieved.

3.03 Flashing is secured to the panel with #8 Tek self-drilling screws installed 1/4" – 1" from outside edge at 12" OC increments along the length.


NOTE: CORNERS MUST BE PLUMB AND STRAIGHT WITH ADJACENT PANELS CONTACTING EACH OTHER. IF THESE CONDITIONS ARE NOT MET IT IS POSSIBLE THAT ANY SUPPLIED CORNER FLASHINGS WILL NOT FIT PROPERLY.

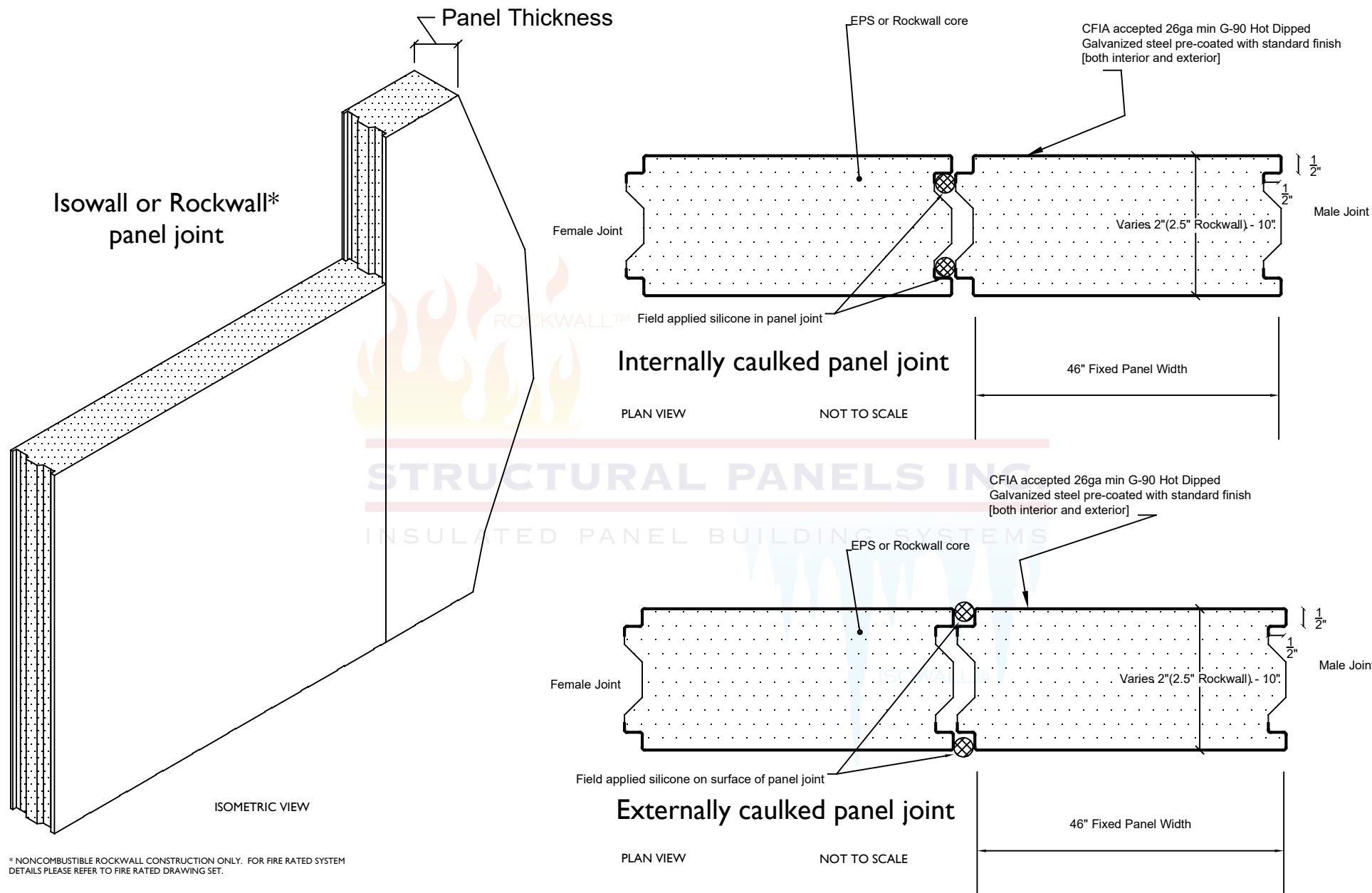


ISOMETRIC VIEW NOT TO SCALE

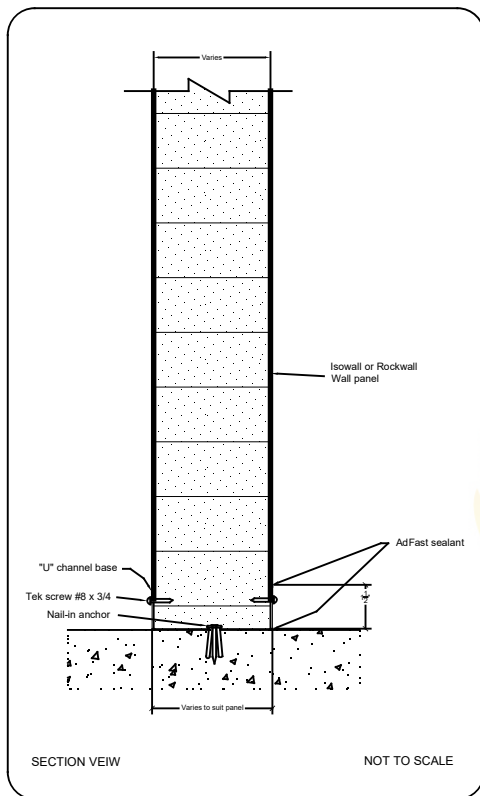


ISOMETRIC VIEW NOT TO SCALE

SITE: STRUCTURAL PANELS INC	2 DRAWING NO.	N/A PROJECT NO.	2017 DATE.	<div>  </div>
TITLE: STANDARD DETAILS - BUTT JOINT CORNER	N/A SCALE AT A4.	NB DRAWN.	1.0 REVISION.	



SITE: STRUCTURAL PANELS INC	3 DRAWING NO.	N/A PROJECT NO.	2017 DATE.	<div> <div>STRUCTURAL PANELS INC.</div> <div>INSULATED PANEL BUILDING SYSTEMS</div> </div>
TITLE: STANDARD DETAILS - PANEL JOINT	N/A SCALE AT A4.	NB DRAWN.	1.2 REVISION.	

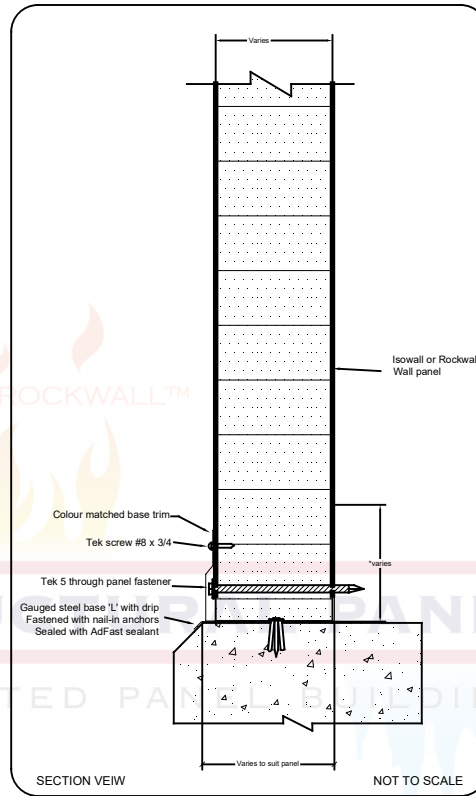


INSTALLING ISOWALL OR ROCKWALL PANELS FROM STRUCTURAL PANELS INC

CONCRETE FLOOR:

1.0 PANEL INSTALLATION:

- 1.1 Apply AdFast sealant to concrete floor as shown beneath U-channel base.
- 1.2 Install U-channel base in desired location, fastening U-channel to concrete floor using 1/2"x1" nail in fasteners at 16" OC minimum. Special care should be taken to ensure a straight run is maintained for proper installation.
- 1.3 Stand panel into place and fasten bottom of panel to U-channel using #8 Tek trim screws at 12" OC.
- 1.4 Stand each additional panel and slide into position and engage lips of adjacent panel. Maintain uniform side joints in order to maintain panel module. Once panel is engaged and in position, repeat step 1.3.
- 1.5 Repeat steps 1.3 and 1.4 until all wall panels are standing and secured in desired position.

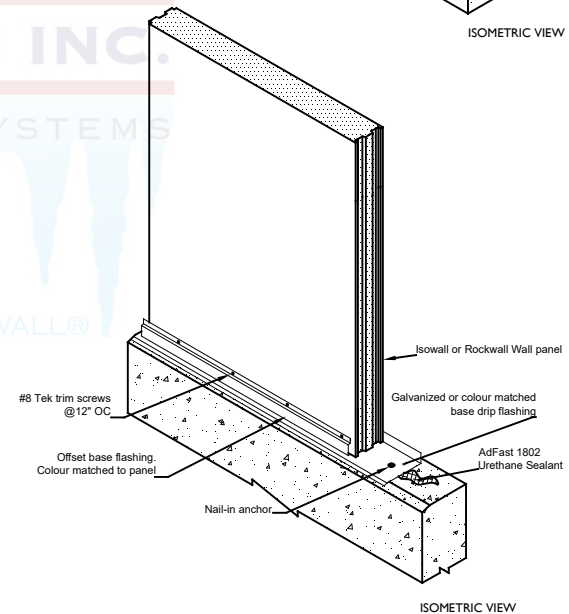
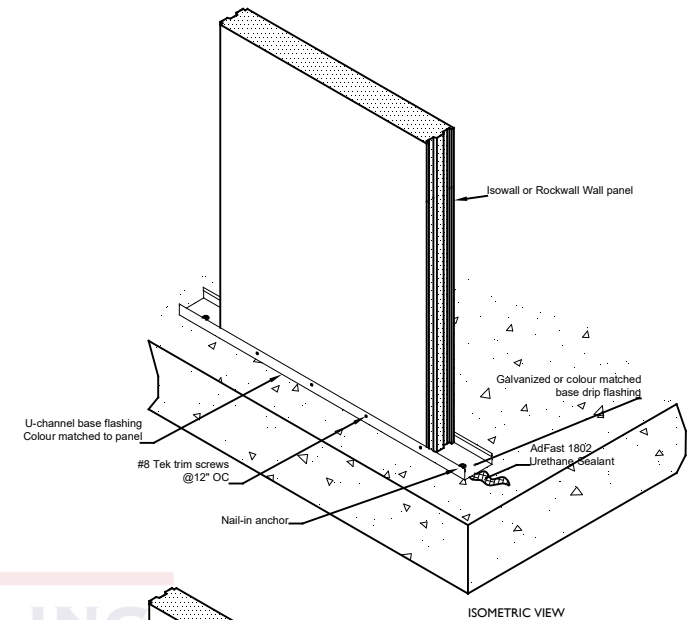


INSTALLING ISOWALL OR ROCKWALL PANELS FROM STRUCTURAL PANELS INC

CONCRETE CURB:

1.0 PANEL INSTALLATION:

- 1.1 Apply AdFast sealant to concrete curb as shown beneath drip base.
- 1.2 Install drip base in desired location, fastening drip to concrete floor using 1/2"x1" nail in fasteners at 16" OC minimum. Special care should be taken to ensure a straight run is maintained for proper installation.
- 1.3 Stand panel into place and fasten bottom of panel to drip base using Tek 5 screws, 3 screws per panel minimum.
- 1.4 Stand each additional panel and slide into position and engage lips of adjacent panel. Maintain uniform side joints in order to maintain panel module. Once panel is engaged and in position, repeat step 1.3.
- 1.5 Repeat steps 1.3 and 1.4 until all wall panels are standing and secured in desired position.



SITE:

STRUCTURAL PANELS INC

TITLE:

STANDARD DETAILS - BASE CONNECTIONS

4

DRAWING NO.

N/A

PROJECT NO.

2017

DATE.

N/A

SCALE AT A4.

NB

DRAWN.

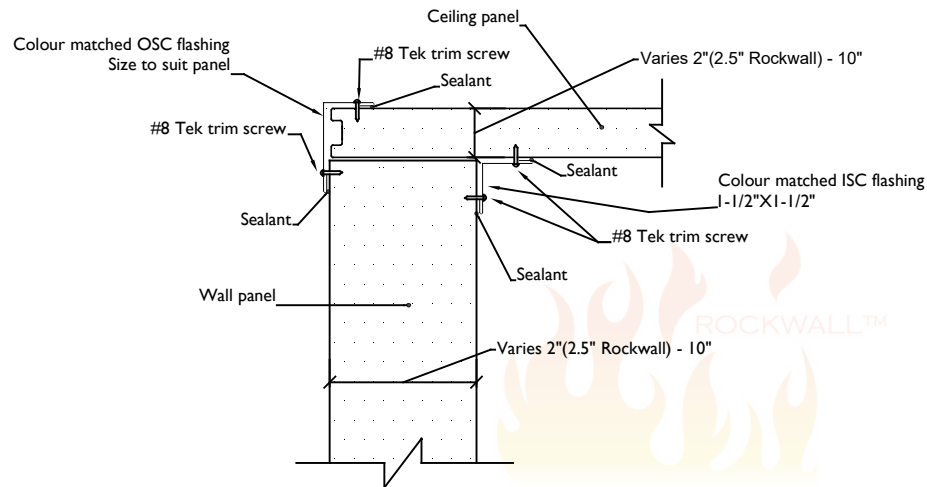
CHECKED.

0

REVISION.

STRUCTURAL PANELS INC.
INSULATED PANEL BUILDING SYSTEMS

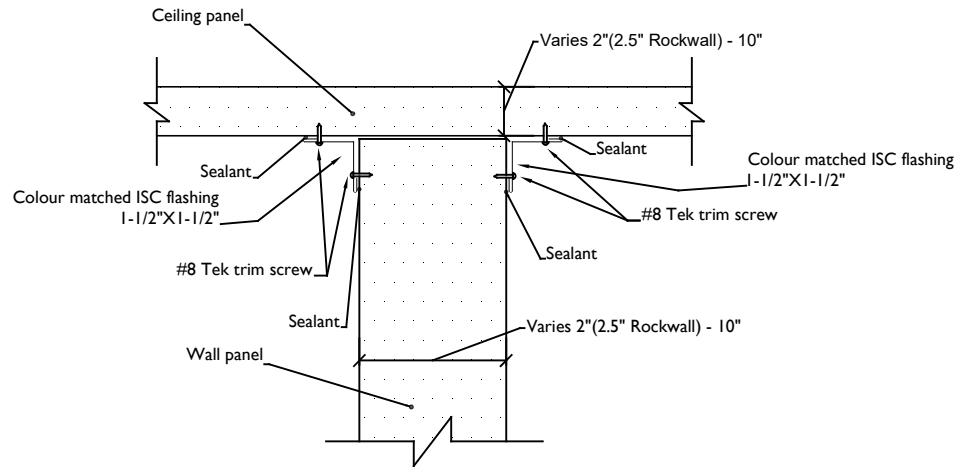
WALL TO CEILING CORNER



SECTION VIEW

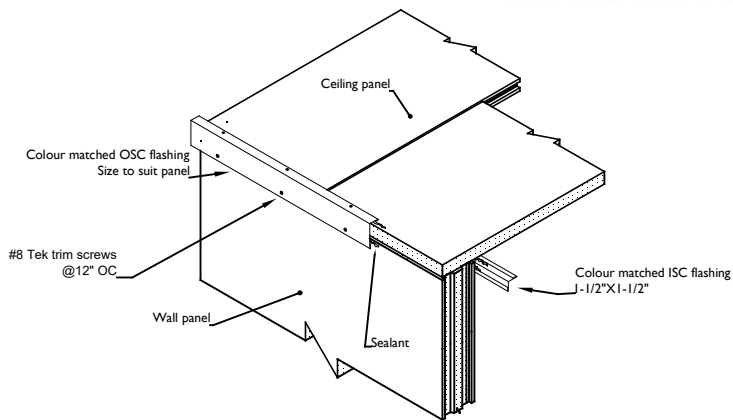
NOT TO SCALE

WALL TO CEILING CONNECTION

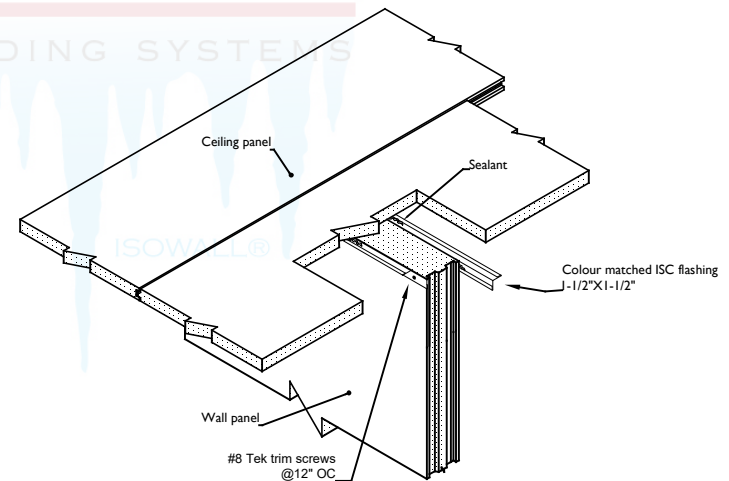


SECTION VIEW

NOT TO SCALE



ISOMETRIC VIEW



ISOMETRIC VIEW

SITE:

STRUCTURAL PANELS INC

5

DRAWING NO.

N/A

PROJECT NO.

2017

DATE.

TITLE:

STANDARD DETAILS - WALL TO CEILING

N/A

SCALE AT A4.

NB

DRAWN.

CHECKED.

0

REVISION.

STRUCTURAL PANELS INC.
INSULATED PANEL BUILDING SYSTEMS

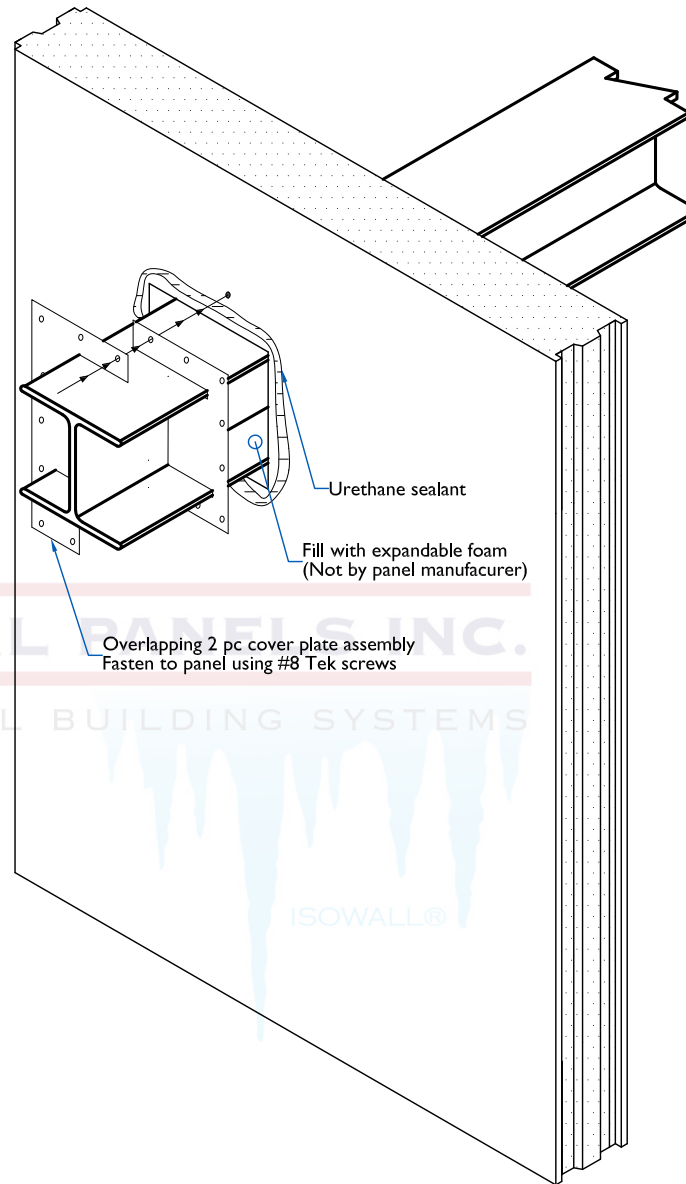
Ensure all gaps around penetrant are filled with expandable foam prior to installation of flashing. Some trimming of expandable foam may be required for proper installation.

Flashing to be sealed to penetrant and panel with urethane sealant.



STRUCTURAL PANELS INC.
INSULATED PANEL BUILDING SYSTEMS

ISOWALL®



SITE:

STRUCTURAL PANELS INC

6

DRAWING NO.

N/A

PROJECT NO.

2017

DATE.

TITLE:

STANDARD DETAILS - Penetration Flashing

N/A

SCALE AT A4.

NB

DRAWN.

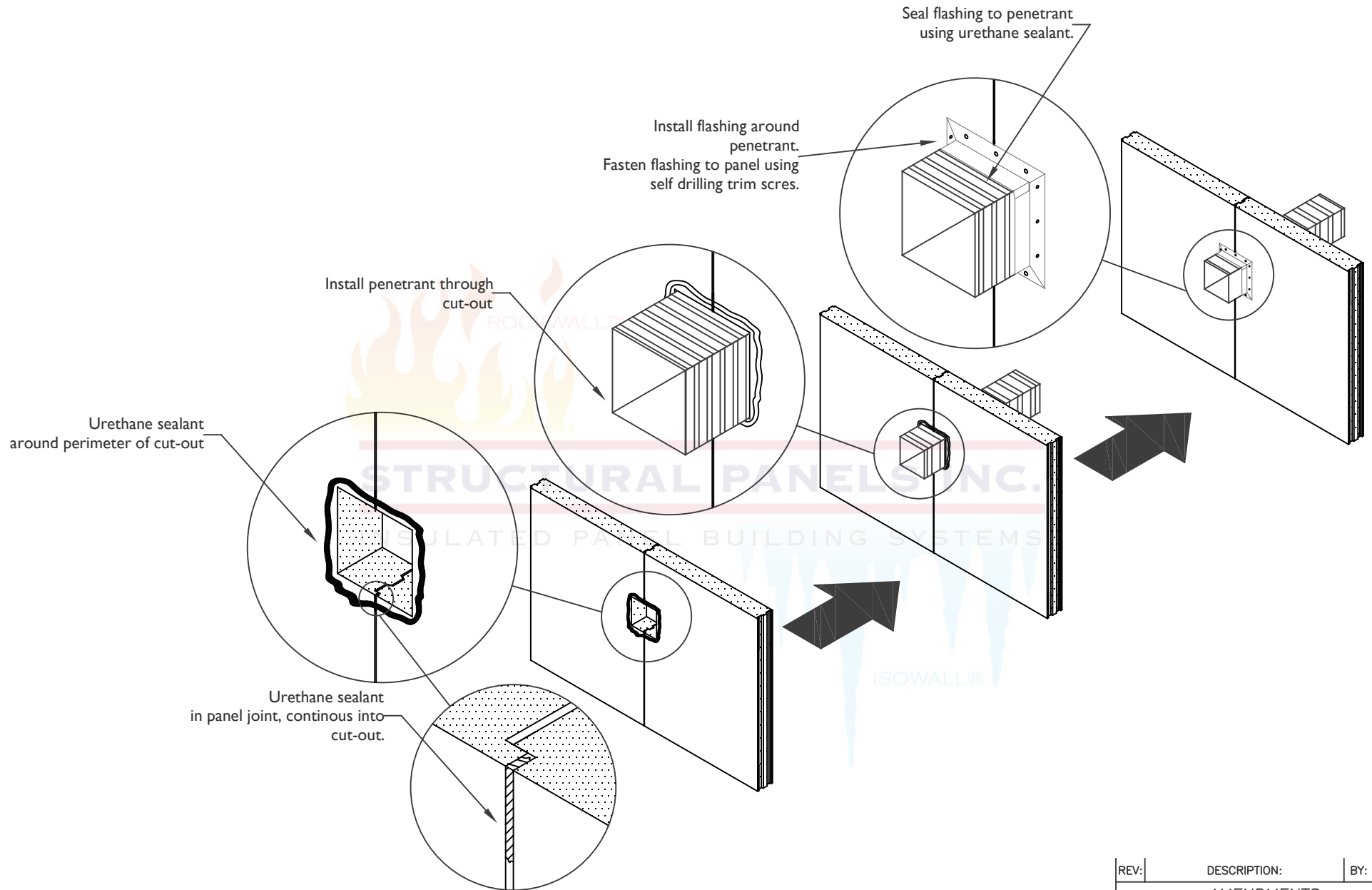
CHECKED.

0

REVISION.

STRUCTURAL PANELS INC.

INSULATED PANEL BUILDING SYSTEMS



REV:	DESCRIPTION:	BY:	DATE:
AMENDMENTS:			

SITE:	STRUCTURAL PANELS INC	7	N/A	2017
TITLE:	STANDARD DETAILS - Penetration Flashing	DRAWING NO.	PROJECT NO.	DATE.
		N/A	NB	0
		SCALE AT A4.	DRAWN.	CHECKED.
				REVISION.

